



CATALOGUE 2010

Inhalt

HIGHTECH

EASYCAD	4
INNER SHOE MEASUREMENT	5
FOOT PRESSURE MEASUREMENT	6
2D-FOOTSCAN	7
VIDEO ANALYSIS.	8

PROPRIO

PROPRIO FOR KID & YOUTH

PROPRIO.kid	9
PROPRIO.springi	10
PROPRIO.A1-0	11
PROPRIO.A1-1	12
PROPRIO.A2-0	13
PROPRIO.A3-0	14
PROPRIO.A3-1	15
PROPRIO.A3-2	16
PROPRIO.A4-0	17
PROPRIO.B1-0	18
PROPRIO.B2-0	19
PROPRIO.B3-0	20
PROPRIO.B3-1	21
PROPRIO.B4-0	22

PROPRIO FOR SPORTSMEN

PROPRIO.bike	23
PROPRIO.golf	24
PROPRIO.ski	25
PROPRIO.fußball	26
PROPRIO.walking.	27
PROPRIO.sport.	28
PROPRIO.D1-0	29
PROPRIO.D1-1	30
PROPRIO.D1-6	31
PROPRIO.D1-7	32
PROPRIO.D2-1	33
PROPRIO.D2-2	34
PROPRIO.D2-3	35
PROPRIO.D2-4	36

PROPRIO FOR ADULTS

PROPRIO.business	37
PROPRIO.C1-0	38
PROPRIO.C1-1	39
PROPRIO.C2-0	40

PROPRIO FOR ANGUISHED PEOPLE

PROPRIO.S1-0	41
PROPRIO.S1-1	42
PROPRIO.S1-2	43
PROPRIO.S2-0	44
PROPRIO.S3-0	45
PROPRIO.S3-1	46
PROPRIO.S3-6	47
PROPRIO.S4-0	48
PROPRIO.S5-0	49
PROPRIO.S5-1	50
PROPRIO.S6-0	51
PROPRIO.S6-1	52
PROPRIO.S7-2	53
PROPRIO.S7-3	54
PROPRIO.E1-0	55
PROPRIO.E1-1	56
PROPRIO.E2-0	57

BIO

FINE CORK BLANKS	58
FINE CORK SOFT PAD INSOLES	59
FINE CORK LEATHER INSOLES	60
COMPRESSED CORK LEATHER with inner joint wedge.	61
COMPRESSED CORKLEATHER INSOLES firmly tumbled	62
COMPRESSED CORK LEATHER SHELL INSOLES.	63

ACTIVE

CNC.CLASSIC.SPORT SHELLS	64
SBS SPORT.BALANCE.SYSTEM	65
SOFT PAD SAFETY SHOE INSOLES	66
SOFT PAD HEEL SPUR-BED	67
SOFT PAD HEEL SPUR INSOLES	68
SOFT PAD INSOLES EVA-DIAPOWER	69
SOFT PAD INSOLES PE with inner joint wedge	70
SOFT PAD INSOLES PE	71
SOFT PAD INSOLES with 100% reset force	72
SOFT PAD SHELL INSOLES	73
EVA-SOFT PAD LEATHER INSOLES with neat 's leather cover	74
SOFT PAD MICROFIBRE INSOLES.	75
PLASTAZOTE-SOFT PAD LEATHER INSOLES	76
EVA-SOFT PAD LEATHER INSOLES with goatskin cover	77
PE-SOFT PAD LEATHER INSOLES	78

SENSITIV

SOFT PAD SANDWICH-INSOLES

EVA-PROPHYLAXIS SANDWICH BLANK salmon	79
EVA-PROPHYLAXIS SANDWICH BLANK blue	80
EVA-PROPHYLAXIS SANDWICH BLANK red	81
EVA-THERAPY SANDWICH BLANK salmon	82
EVA-THERAPY SANDWICH BLANK blue	83

SPRiNGi

SHELL INSOLES FOR KIDS

SOFT PAD PLASTIC SHELLS with textile cover - little bear.	84
SOFT PAD PLASTIC SHELLS with microfibre cover	85
SOFT PAD PLASTIC SHELLS coloured	86

CITY

PLASTIC CORE-STABLE

INJECTION MOULDED PLASTIC CORES	87
PLASTIC SOFT PAD INSOLES with EVA-padding	88
PLASTIC-LEATHER INSOLES	89
PLASTIC-SOFT PAD INSOLES with EVA forefoot pad.	90
INJECTION MOULDED PLASTIC CORES with flat heel area.	91
PLASTIC SOFT PAD INSOLES with EVA-layer.	92
PLASTIC LEATHER INSOLES	93
PLASTIC MODULE INSOLES	94

PLASTIC BED-STABLE

PLASTIC BLANKS with slight heel hollow	95
PLASTIC BLANKS with flat heel area	96

PLASTIC CORE-FLEXIBLE

SUPER-THIN PUMPS INSOLE	97
PLASTIC HEEL MODULE INSOLES with goatskin	98
PLASTIC HEEL MODULE INSOLES with microfibre cover.	99
PLASTIC CORES-FLEXIBLE with slight heel hollows	100
PLASTIC CORES-FLEXIBLE with flat heel area	101
PLASTIC-LEATHER INSOLES	102
PLASTIC SOFT PAD INSOLES with PE-layer	103
PLASTIC HEEL SPUR INSOLES	104
PLASTIC SOFT PAD INSOLES with cover material.	105

PLASTIC BED-VITAL

PLASTIC COVER INSOLES vital	106
PLASTIC SOFT PAD INSOLES - comfort pad	107

MATERIAL

SPRINGOTEC MILLING MATERIAL

SPRINGOTEC STARTERKIT	108
SPRINGOTEC EVA-COMBI 21.	109
SPRINGOTEC EVA-COMBI 22.	110
SPRINGOTEC EVA-SANDWICH 31.	111
SPRINGOTEC EVA-SANDWICH 33.	112
SPRINGOTEC EVA-SANDWICH 34.	113
SPRINGOTEC EVA-SANDWICH 35.	114
SPRINGOTEC EVA-CORK 50	115
SPRINGOTEC EVA-SANDWICH 36.	116
SPRINGOTEC PU 25	117
SPRINGOTEC EVA 30	118
SPRINGOTEC EVA 35 blue	119
SPRINGOTEC EVA 35 brown	120
SPRINGOTEC EVA 35 motley	121
SPRINGOTEC EVA 45	122

LEATHER & COVER MATERIALS

X-STATIC LININGS	123
MICROFIBRE	124
TEXTILES	125
SPRINGOGUM.	126
NEATS LEATHER AASRAUH	127
GOATSKIN	128
CALF-LINING LEATHER	129

SOFT FOAMS

ORTHOSOFT COLOURED	130
DIAPOWER	131
ORTHOSOFT	132
SPRINGOLON / SPRINGOLON PLUS	133

STIFFENING MATERIALS

BERLENCOMBI	134
BERLENFLEX	135

EASYCAD



analysis- and construction software for the central insole milling

- analysis modules KID, SPORT, PAIN
- milling without investment risk
- no disclosure of sensible customer data
- delivery within 3 workdays
- safe application of sensomotoric active principle

foot measurement and integration	foot analysis and suitable insole model finding	individualise insole model and send to SPRINGER
<ul style="list-style-type: none"> • insert 2D-Scann or pressure measurement • customer data transfer • all current outside products usable • interfaces on request 	<p style="text-align: center;">ANALYSIS MODULES</p> <ul style="list-style-type: none"> • entered analysis parameters automatically select the right PROPRIO-model • sample measurements facilitate the customer pitch. • creation of an individualised analysis report with own logo • PROPRIO-library with wide range of models for kids, sportsmen and anguished people <p style="text-align: center;">BASIS MODULE</p> <ul style="list-style-type: none"> • select classic and sensomotoric basic models according to age, foot type, width, edge height and sport if need be • input of customised models as requested 	<ul style="list-style-type: none"> • measurement and insole put one another • enter foot size • define longitudinal arch • define modules like pad, retrocapitale and or toe strip in their position, form or height • select the suitable material between 13 durable monolayer • send mill file to SPRINGER

INNER SHOE MEASUREMENT

foot pressure-inner shoe measuring soles for the dynamic analysis of power- and pressure distribution with and without foot bedding



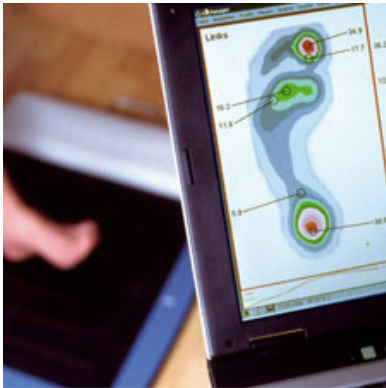
- most exact result with ultraflexible soles
- pressure data as a colour code or 3D- lattice-structure
- display of maximum values and power curves for definable foot zones
- measurement of the dorsal side possible
- scientific analysis parameters DIABETES - University Münster

soles	number of sensors	data transfer	measuring frequency	reproduction
<ul style="list-style-type: none"> • pes adductus 	<ul style="list-style-type: none"> • 40-64 capacitive sensors, singly calibrated according to MPG 	<ul style="list-style-type: none"> • wireless transmit receiver allows free mobility • 15m range in buildings • 100m range outdoors 	<ul style="list-style-type: none"> • 200 Hz allow analysis from going to athletically dynamic running 	<ul style="list-style-type: none"> • very minor deviations up to 5%

exclusive service
<ul style="list-style-type: none"> • software module "DIABETES PRINTOUT" • MPG-certification !!! • biomechanic seminars • hire purchase financing; 36, 48 or 60 months

extent of delivery	hardware- and software requirements
<ul style="list-style-type: none"> • software packet incl. "DIABETES PRINTOUT" 	<ul style="list-style-type: none"> • USB 2.0

FOOT PRESSURE MEASUREMENT



pressure measuring plate 4mm thin for the static and dynamic analysis of force- and pressure distribution

- pressure data as a colour code or 3D- lattice structure
- integration into SPRINGER.EASYCAD
- indication of maximum values and power curves for definable foot zones
- temporal forerun and return function of the pressure measurement
- scientifically proven analysis parameters DIABETES – University Münster

measuring surface	number of sensors	measuring frequency	reproduction	flexibility
<ul style="list-style-type: none"> • measuring result 	<ul style="list-style-type: none"> • 	<ul style="list-style-type: none"> • 150 Hz allow analysis from going to athletically dynamic running 	<ul style="list-style-type: none"> • very minor deviations up to 5% 	<ul style="list-style-type: none"> • total height only 4mm thin • handy • easy to transport

exclusive service
<ul style="list-style-type: none"> • inner shoe- and fitting pressure technique • MPG certification !!! • biomechanic seminars • hire purchase financing; 24, 36 or 48 months

extent of delivery	hardware- and software requirements
<ul style="list-style-type: none"> • 1x pressure measuring plate GPMultisens • 1x USB cable • 1x power supply • 1x software package 	<ul style="list-style-type: none"> • Vista

2D-FOOTSCAN



2D-footscan SPEED for the optical ascertainment of significant foot measures and indications

- scan within 5 sec
- automatic search for foot contour
- integration into SPRINGER.EASYCAD
- coloured optical direct ascertainment of the foot
- pin sharp images and print of the feet 1:1
- complete archiving of the customers foot measurements

exclusive service
<ul style="list-style-type: none"> • MPG certification !!! • interfaces to diverse accounting programs • hire purchase financing; 24 or 36 months

external measurements	scan size	pedestral fitting
<ul style="list-style-type: none"> • height: 11,50 cm 	<ul style="list-style-type: none"> • length: 44,00 cm • width: 31,00 cm 	<ul style="list-style-type: none"> • technical drawing on request

extent of delivery	hardware- and software requirements
<ul style="list-style-type: none"> • GP STEPSCAN 	<ul style="list-style-type: none"> • PC processor from Pentium IV • monitor minimum 17" • operating system Windows XP

VIDEO ANALYSIS



software for visualisation and evaluation of motion sequences

- exact analysis with registered angles, plumbs and rasters
- parallel display up to 4 film sequences
- zoom function and different play back speeds
- large report possibilities

cameras and foot pressure measurement	interfaces	system requirements
<ul style="list-style-type: none"> • integration of 2 cameras (25 Hz/ 50 Hz fields) possible • synchron with foot pressure measurement 	<ul style="list-style-type: none"> • USB 2.0 • firewire 	<ul style="list-style-type: none"> • or Vista

PROPRIO.kid



PE-soft pad blank with sensomotoric POWERSPOTS

- childhood planovalgus foot and slight rotation gaits
- activation of the foot musculature
- learn the right movement pattern
- SG-contaminant tested

Im Express service: model 130 blue

model	design	material	sizes
130	long sole medium wide	<ul style="list-style-type: none"> • Oxthosoft white 15 mm(PE 40 Shore) 	19/20 - 35/36

additional design	marketing service
<ul style="list-style-type: none"> • orthosoft blue • microfibre cover loose/ tight in beige, blue, orange, green, pink, black 	<ul style="list-style-type: none"> • flyers, deco column shop, window decoration

active principle
<ul style="list-style-type: none"> • medial infospot supports the heel bone balcony and activates the tixialis musculature • lateral infospot activates the peronaeus musculature • pad cunteracts a rotation gait depending on progress • toe strip ensures a very good toe tip contact, promotes the subconscious perception

PROPRIO.springi

soft pad – plastic shell blank with sensomotoric POWERSPOTS



- infospots activate the musculature
- dimensionally stable bed ensures good heel hold
- flexible edges give pressure weals no chance
- certified material quality

Im Express-service: model 5130

model	design	width	sizes
5130 long sole	long sole, blue microfibre cover	medium	19/20 – 35/36
5330 langsohlig	long sole, coloured textile cover- little bear	medium	19/20 – 35/36

processing – advantage	marketing-service
Position and height of the sensomotoric pulsers are changeable easily by spot warming. With PROPRIO.springi® you as a kid's specialist finally have the opportunity to treat the infantile talipes valgus cost- effectively according to the latest scientific findings.	<ul style="list-style-type: none"> • flyers, deco column shop, window decoration

active principle
<ul style="list-style-type: none"> • support under the heel bone balcony for mor intensive activation of the shin musculature • stabilisation of the foot contour by more intensive activation of the der calf bone musculature • flat floor contact of the toe tips improves coordination and perception

PROPRIO.A1-0

A1-0 related to flat valgus feet at

- patients with neurological disease
- bad perception
- serious childhood foot deformities, even without neurological disease



Individual advice service. fon: 030- 49 000 343. Delivery within 48h.

model	design	sizes
A1-0 *****	5 stars - EVA milled 35 Shore with PP-plate, loose cover	19-50
A1-0 ****	4 stars - EVA milled 35 Shore without PP-plate, loose cover	19-50
A1-0 ***	3 stars - EVA milled 35 Shore with PP-plate, without cover	19-50
A1-0 **	without PP-plate, without cover	19-50

cover options
<ul style="list-style-type: none"> • textile cover - little bear, coloured

some indications
<ul style="list-style-type: none"> • childhood hypotonic/ hypertonic flat valgus foot • flatfoot • neutral / slightly inside rotated gait

PROPRIO.A1-1

A1-1 relating to flat valgus feet club feet at

- patients with neurological disease
- bad apperception



Individual advice service. fon: 030- 49 000 343. Delivery within 48h.

model	design	sizes
A1-1 *****	5 stars - EVA milled 35 Shore with PP-plate, loose cover	19-50
A1-1 ****	4 stars - EVA milled 35 Shore without PP-plate, loose cover	19-50
A1-1 ***	3 stars - EVA milled 35 Shore with PP-plate, without cover	19-50
A1-1 **	without PP-plate, without cover	19-50

cover options	
<ul style="list-style-type: none"> • textile cover - little bear, coloured 	

some indications	
<ul style="list-style-type: none"> • hypertonic club foot • habitual clubfoot gait • ICP 	

PROPRIO.A2-0

A2-0 relating to snapped off contracted foot at

- patients with neurological disease
- bad apperception
- inside rotated gait
- serious childhood foot deformities even without neurological disorder



Individual advice service. fon: 030- 49 000 343. Delivery within 48h.

model	design	sizes
A2-0 *****	5 stars - EVA milled 35 Shore with PP-plate, loose cover	19-50
A2-0 ****	4 stars - EVA milled 35 Shore without PP-plate, loose cover	19-50
A2-0 ***	3 stars - EVA milled 35 Shore with PP-plate, without cover	19-50
A2-0 **	without PP-plate, without cover	19-50

cover options	
<ul style="list-style-type: none"> • textile cover - little bear, coloured 	

some indications	
<ul style="list-style-type: none"> • neutral /slightly inside rotated gait 	

PROPRIO.A3-0

A3-0 relating to flat valgus foot and serious heel valgus at

- patients with neurological disease
- bad apperception
- inside rotated gait
- serious childhood foot deformities even without neurological disorder



Individual advice service. fon: 030- 49 000 343. Delivery within 48h.

model	design	sizes
A3-0 *****	5 stars - EVA milled 35 Shore with PP-plate, loose cover	19-50
A3-0 ****	4 stars - EVA milled 35 Shore without PP-plate, loose cover	19-50
A3-0 ***	3 stars - EVA milled 35 Shore with PP-plate, without cover	19-50
A3-0 **	without PP-plate, without cover	19-50

cover options
<ul style="list-style-type: none"> • textile cover - little bear, coloured

some indications
<ul style="list-style-type: none"> • child hypotonic / hypertonic flat valgus foot • flatfoot • inside rotated gait

PROPRIO.A3-1

A3-1 relating to flat valgus foot and serious heel valgus or snapped off contracted feet at



- patients with neurological disease
- bad apperception
- outside rotated gait
- serious childhood foot deformities even without neurological disorder

Individual advice service. fon: 030- 49 000 343. Delivery within 48h.

model	design	sizes
A3-1 *****	5 stars – EVA milled 35 Shore with PP-plate, loose cover	19-50
A3-1 ****	4 stars - EVA milled 35 Shore without PP-plate, loose cover	19-50
A3-1 ***	3 stars - EVA milled 35 Shore with PP-plate, without cover	19-50
A3-1 **	without PP-plate, without cover	19-50

cover options	
<ul style="list-style-type: none"> • textile cover - little bear, coloured 	

some indications	
<ul style="list-style-type: none"> • neutral / outside rotated gait 	

PROPRIO.A3-2

A3-2 relating to operated clubfeet at

- forefoot adduction
- inside rotated gait
- heel valgus / -varus



Individual advice service. fon: 030- 49 000 343. Delivery within 48h.

model	design	sizes
A3-2 *****	5 stars - EVA milled 35 Shore with PP-plate, loose cover	19-50
A3-2 ****	4 stars - EVA milled 35 Shore without PP-plate, loose cover	19-50
A3-2 ***	3 stars - EVA milled 35 Shore with PP-plate, without cover	19-50
A3-2 **	2 stars - EVA milled 35 Shore without PP-plate, without cover	19-50

cover options	
<ul style="list-style-type: none"> • textile cover - little bear 	

some indications	
<ul style="list-style-type: none"> • rebellious clubfoot • pes adductus 	

PROPRIO.A4-0

A4-0 relating to clubfeet at

- patients with neurological disease
- bad apperception
- inside rotated gait



Individual advice service. fon: 030- 49 000 343. Delivery within 48h.

model	design	sizes
A4-0 *****	5 stars - EVA milled 35 Shore with PP-plate, loose cover	19-50
A4-0 ****	4 stars - EVA milled 35 Shore without PP-plate, loose cover	19-50
A4-0 ***	3 stars - EVA milled 35 Shore with PP-plate, without cover	19-50
A4-0 **	without PP-plate, without cover	19-50

cover options	
<ul style="list-style-type: none"> • textile cover - little bear, coloured 	

some indications	
<ul style="list-style-type: none"> • clubfoot • contracted foot • contracted pes adductus 	

PROPRIO.B1-0

relating to normal feet at

- inside rotated gait

Individual advice service. fon: 030- 49 000 343. Delivery within 48h.



model	design	sizes
B1-0 *****	5 stars - EVA milled 35 Shore with PP-plate, loose cover	19-50
B1-0 ****	4 stars - EVA milled 35 Shore without PP-plate, loose cover	19-50
B1-0 ***	3 stars - EVA milled 35 Shore with PP-plate, without cover	19-50
B1-0 **	without PP-plate, without cover	19-50

cover options	
<ul style="list-style-type: none"> • textile cover, coloured 	

some indications	
<ul style="list-style-type: none"> • coxa valga et antetorta 	

PROPRIO.B2-0

relating to flat valgus feet at

- pronounced inside rotated gait

Individual advice service. fon: 030- 49 000 343. Delivery within 48h.



model	design	sizes
B2-0 *****	5 stars - EVA milled 35 Shore with PP-plate, loose cover	19-50
B2-0 ****	4 stars - EVA milled 35 Shore without PP-plate, loose cover	19-50
B2-0 ***	3 stars - EVA milled 35 Shore with PP-plate, without cover	19-50
B2-0 **	without PP-plate, without cover	19-50

cover options	
<ul style="list-style-type: none"> • textile cover - little bear, coloured 	

some indications	
<ul style="list-style-type: none"> • pes adductus • lowered contracted foot • coxa valga et antetorta 	

PROPRIO.B3-0

relating to flat valgus feet with

- slight outside rotated gait

Individual advice service. fon: 030- 49 000 343. Delivery within 48h.



model	design	sizes
B3-0 *****	5 stars - EVA milled 35 Shore with PP-plate, loose cover	19-50
B3-0 ****	4 stars - EVA milled 35 Shore without PP-plate, loose cover	19-50
B3-0 ***	3 stars - EVA milled 35 Shore with PP-plate, without cover	19-50
B3-0 **	cover	19-50

cover options	
<ul style="list-style-type: none"> • textile cover - little bear, coloured 	

some indications	
<ul style="list-style-type: none"> • flat valgus foot • flatfoot 	

PROPRIO.B3-1

B3-1 related to flat valgus feet at

- pronounced outside rotated gait

Individual advice service. fon: 030- 49 000 343. Delivery within 48h.



model	design	sizes
B3-1 *****	5 stars - EVA milled 35 Shore with PP-plate, loose cover	19-50
B3-1 ****	4 stars - EVA milled 35 Shore without PP-plate loose cover	19-50
B3-1 ***	3 stars - EVA milled 35 Shore with PP-plate, without cover	19-50
B3-1 **	without PP-plate, without cover	19-50

cover options	
<ul style="list-style-type: none"> • textile cover - little bear, coloured 	

some indications	
<ul style="list-style-type: none"> • flat valgus foot • flatfoot 	

PROPRIO.B4-0

A4-0 relating to clubfeet at

- patients with neurological disease
- bad apperception
- inside rotated gait



Individual advice service. fon: 030- 49 000 343. Delivery within 48h.

model	design	sizes
A4-0 *****	5 stars - EVA milled 35 Shore with PP-plate, loose cover	19-50
A4-0 ****	4 stars - EVA milled 35 Shore without PP-plate, loose cover	19-50
A4-0 ***	3 stars - EVA milled 35 Shore with PP-plate, without cover	19-50
A4-0 **	without PP-plate, without cover	19-50

cover options	
<ul style="list-style-type: none"> • textile cover - little bear, coloured 	

some indications	
<ul style="list-style-type: none"> • clubfoot • contracted foot • contracted pes adductus 	

PROPRIO.bike



Thin plastic soft pad shell blank with sensomotoric POWERSPOTS

- special relief zone in the ball area
- stable chassis with EVA-damping foam
- exercise muscular equilibrium
- avoid numbness
- prevent calf cramps

Express service: model 1738

model	design	width	sizes
1738	ball pad	medium	35 – 47/48

processing - advantage	
Position and height of the sensomotoric pulsers are changeable easily by spot warming. With PROPRIO.bike® you as a sport supply specialist have have the chance to give the sportsman a high functional training tool for the feet.	

marketingservice
<ul style="list-style-type: none"> • flyers, window decoration, deco column shop

PROPRIO.golf



milled EVA-soft pad blank with specific golf swinging relief zones

- exercise supporting back muscles
- optimise swinging technique
- prevent injuries

model	design	material	sizes
G1-0 right-hander	medium-wide	relief modules made of PU	35 - 50
G1-0 left-hander	medium-wide	PU	35 - 50

marketing service
<ul style="list-style-type: none"> • flyers, deco column shop, window decoration

PROPRIO.ski



thin soft pad plastic shell blank with sensomotoric POWERSPOTS and cold protection

- suitable for use in in ski- and skates
- stable chassis with EVA-damping foam
- protective aluminium foil shield against cold ground
- avoid numbness
- activate knee- stabilising muscle chains

Express service: model 1728

model	design	width	sizes
1728	special aluminium foil	medium	35 – 47/48

processing - advantage	
Position and height of the sensomotoric pulsers are changeable easily by spot warming With PROPRIO.ski® you as a sport supply specialist have the chance to give the active winter sport athletes a high functional training tool for the feet.	

marketing service
<ul style="list-style-type: none"> • flyers, deco column shop, window decoration

PROPRIO.fußball



thin soft pad plastic shell blank with sensomotoric POWERSPOTS

- suitable for use in tight football- and skating shoes
- stable chassis with EVA-damping foam
- avoid adductor problems
- compensate varus malalignment
- stabilise lower ankle joint

Express service: model 1730

model	design	width	sizes
1730	silver textile cover	medium	35 – 47/48

processing - advantage	
Position and height of the sensomotoric pulsers are changeable easily by spot warming With PROPRIO.football® you as a sport supply specialist have the chance to give the active kickers a high functional training tool for the feet.	

marketing service
<ul style="list-style-type: none"> • flyers, deco column shop, window decoration

PROPRIO.walking

EVA-soft pad blank with sensomotoric POWERSPOTS



- improve nerve- muscle interaction
- exercise gait stability
- prevent joint overstraining
- SG-contaminant- tested material

Express-s service: model 138

model	design	material	sizes
138	medium-wide	orange in 30 Shore	35 – 47/48

cover options	marketing service
<ul style="list-style-type: none"> • black 	<ul style="list-style-type: none"> • flyer, deco column shop, window decoration

DWI - German Walking Institute
<p>Note: Leading walking experts point out that nerve- muscle interaction is not exercised optimally if the balance will be more realised by resting on the sticks than by proprioceptive training.</p> <p>Solution - practice On uneven ground you often should exercise without sticks.</p> <p>Solution – insoles. Here PROPRIO.walking produces relief. The four infospots on the insole influence muscle reactions by specific pressure pulses and help the sportsman doing the physiological exact movements sub consciously and to exercise actively, so that he doesn't lose his reaction mechanisms.</p> <p>Note: At Nordic-Walking higher vertical forces occur in the heel region.</p> <p>Solution - practice It is advised to pay attention to a shortened step and a flat tread.</p> <p>Solution - insoles Special heel damping insoles like PROPRIO.walking help here.</p>

PROPRIO.sport



PE-soft pad blanks with sensomotoric POWERSPOTS

- vitalisation of the foot musculature
- Richtige Bewegungsmuster erlernen
- reduce sport- related complaints
- increase muscular effort
- SG-contaminant- tested

Express service: model 128

model	design	material	sizes
128	long sole, medium-wide	• Orthosoft white 15 mm (PE 40 Shore)	35 – 47/48
128 / 1 Modul	long sole, medium-wide		35 – 47/48
128 / 3 Module	long sole, medium-wide		35 – 47/48
129	long sole, wide		35 – 47/48

cover options	marketing service
<ul style="list-style-type: none"> • blue • microfibre, loose/tight in blue, orange, green, pink, black 	<ul style="list-style-type: none"> • flyer, deco column shop, window decoration

modules
<ul style="list-style-type: none"> • 1 module – heel pad loose, Lunalastic • 3 modules - heel- and MFK-pad, loose, Lunalastic

active principle
<ul style="list-style-type: none"> • medial POWERSPOT activates the tibialis musculature • lateral POWERSPOT activates the muscular stapes as an opposite to the medial information • pad and toe strip generate an initial tension in the gastrocnemius muscle; it slackens off • hindfoot shell stabilises the calcaneus

PROPRIO.D1-0

D1-0 relating to normal feet and slight overpronation



- injury prophylaxis
- therapy of sport- related complaints
- performance optimization

**Individual advice service. fon: 030- 49 000 343.
Delivery within 48h.**

model	design	sizes
D1-0 ****	4 stars - EVA-Sandwich milled 50/ 25/ 35 Shore without PP-plate loose cover	35-50
D1-0 **	without cover	35-50

cover options
<ul style="list-style-type: none"> • x-static silver textile cover

some indications
<ul style="list-style-type: none"> • normal foot

PROPRIO.D1-1

D1-1 relating to flat valgus feet and marked overpronation



- injury prophylaxis
- therapy of sport- related complaints
- performance optimization

**Individual advice service. fon: 030- 49 000 343.
Delivery within 48h.**

model	design	sizes
D1-1 ****	4 stars - EVA-Sandwich milled 50/ 25/ 35 Shore without PP-plate, loose cover	35-50
D1-1 **	loose cover	35-50

cover options
<ul style="list-style-type: none"> • x-static silver textile cover

some indications
<ul style="list-style-type: none"> • external rotation

PROPRIO.D1-6

D1-6 relating to flat valgus feet and Achilles tendon complaints



- injury prevention
- therapy sport- related diseases
- performance optimization

**Individual advice service. fon: 030- 49 000 343.
Delivery within 48h.**

model	design	sizes
D1-6 ****	4 stars - EVA-Sandwich milled 50/ 25/ 35 Shore without PP-plate, loose cover	35-50
D1-6 **	without cover	35-50

cover options
<ul style="list-style-type: none"> • microfibre, beige, blue, orange, black • x-static silver textile cover

some indications
<ul style="list-style-type: none"> • induration sural musculature

PROPRIO.D1-7

D1-7 relating to plantar fasciitis and heel spur



- injury prophylaxis
- therapy sport- related complaints
- performance optimization

**Individual advice service. fon: 030- 49 000 343.
Delivery within 48h.**

model	design	sizes
D1-7 ****	4 stars - EVA-Sandwich milled, 50/ 25/ 35 Shore without PP-plate, loose cover	35-50
D1-7 **	without cover	35-50

cover options
<ul style="list-style-type: none"> • microfibre, beige, blue, orange, black • x-staxic silver textile cover

some indications
<ul style="list-style-type: none"> • plantar fasciitis, heel spur

PROPRIO.D2-1

D2-1 relating to flat valgus feet, supine tread and overpronation



- injury prophylaxis
- therapy sport - related complaints
- performance optimization

**Individual advice service. fon: 030- 49 000 343.
Delivery within 48h.**

model	design	sizes
D2-1 ****	4 stars - EVA-Sandwich milled, 50/ 25/ 35 Shore without PP-plate, loose cover	35-50
D2-1 **	without cover	35-50

cover options
<ul style="list-style-type: none"> • microfibre, beige, blue, orange, black • x-static silver textile cover, black

some indications
<ul style="list-style-type: none"> • distorsion tendency

PROPRIO.D2-2

D2-2 relating to contracted feet, heel varization and strong supine gait



- injury prophylaxis
- therapy sport- related complaints
- performance optimization

**Individual advice service. fon: 030- 49 000 343.
Delivery within 48h.**

model	design	sizes
D2-2 ****	4 stars - EVA-Sandwich milled 50/ 25/ 35 Shore without PP-plate, loose cover	35-50
D2-2 **	without cover	35-50

cover options
<ul style="list-style-type: none"> • microfibre, beige, blue, orange, black • x-static silver textile cover, black

some indications
<ul style="list-style-type: none"> • contracted foot, splayfoot

PROPRIO.D2-3

D2-3 relating to plantar fasciitis and heel spur



- injury prophylaxis
- therapy of sport- related complaints
- performance optimization

**Individual advice service. fon: 030- 49 000 343.
Delivery within 48h.**

model	design	sizes
D2-3 ****	4 stars - EVA-Sandwich milled 35/ 25/ 50 Shore without PP-plate, with loose cover	35-50
D2-3 **	without cover	35-50

cover options	
<ul style="list-style-type: none"> • x-static silver textile cover, black 	

some indications	
<ul style="list-style-type: none"> • contracted foot, splayfoot, • plantar fasciitis, heel spur 	

PROPRIO.D2-4

D2-4 relating to contracted feet and achillodynia



- injury prophylaxis
- therapy of sport- related complaints
- performance optimization

**Individual advice service. fon: 030- 49 000 343.
Delivery within 48h.**

model	design	sizes
D2-4 ****	4 stars - EVA-Sandwich milled 50/ 25x 35 Shore without PP-plate, loose cover	35-50
D2-4 **	without cover	35-50

cover options
<ul style="list-style-type: none"> • microfibre, beige, blue, orange, black • x-static silver textile cover

some indications
<ul style="list-style-type: none"> • induration of sural musculature

PROPRIO.business



Thin plastic soft pad shell blank with sensomotoric POWERSPOTS

- suitable for elegant business shoes
- stable chassis with EVA-damping foam
- alleviation of headache and backache
- improvement of the body statics
- exercise muscle balance

Im Express-service: model 1737

model	design	width	sizes
1737	ball pad	medium	35 – 47/48

processing - advantage	
Position and level of the sensomotoric pulsers can be changed easily by spot warming.	

marketing service
<ul style="list-style-type: none"> • flyers, window decoration, deco column shop

PROPRIO.C1-0



C1-0 relating to slightly lowered foot type

- suitable for comfortable footwear
- improvement of the body statics
- therapy of pain- related diseases
- correction of muscular dysbalances

**Individual advice service. fon: 030- 49 000 343.
Delivery within 48h.**

model	design	sizes
C1-0	EVA milled 45 Shore, white, loose cover	35-50
C1-0	without cover	35-50

cover options	
<ul style="list-style-type: none"> • silver textile cover, x-static 	

some indications	
<ul style="list-style-type: none"> • flat valgus foot, slack flatfoot, lowered contracted foot, splayfoot, partially contracted flat valgus foot 	

PROPRIO.C1-1



C1-1 relating to pronounced lowered foot type

- suitable for comfortable footwear
- improvement of the body statics
- therapy of pain- related diseases

**Individual advice service. fon: 030- 49 000 343.
Delivery within 48h.**

model	design	sizes
C1-1	EVA milled 45 Shore, white, loose cover	35-50
C1-1	EVA milled 45 Shore, white, without cover	35-50

cover options	
<ul style="list-style-type: none"> • silver textile cover, x-static 	

some indications	
<ul style="list-style-type: none"> • flat valgus foot, slack flatfoot, lowered contracted foot, splayfoot, partially contracted flat valgus foot 	

PROPRIO.C2-0



relating to foot lifting weakness

- suitable for comfortable footwear
- improvement of the body statics
- therapy of pain- related diseases
- correction of muscular dysbalances

**Individual advice service. fon: 030- 49 000 343.
Delivery within 48h.**

model	design	sizes
C2-0	EVA milled 45 Shore, white, loose cover	35-50
C2-0	35-50	

cover options	
<ul style="list-style-type: none"> • silver textile cover x-static 	

some indications	
<ul style="list-style-type: none"> • slight clubfoot, rebellious clubfoot • state after apoplexy 	

PROPRIO.S1-0



S1-0 suitable for elegant footwear and sneakers

- improvement of the body statics
- Verbesserung der Körperstatik
- correction of muscular dysbalances
- alleviation of backache and joint pain

**Individual advice service. fon: 030- 49 000 343.
Delivery within 48h.**

model	design	sizes
S1-0	EVA milled 35 Shore, brown, loose cover	35-50
S1-0	without cover	35-50

cover options
<ul style="list-style-type: none"> • microfibre, beige, brown, blue, orange, green, black • x-static silver textile cover, black

some indications
<ul style="list-style-type: none"> • craniomandibular dysfunction (CMD)

PROPRIO.S1-1



relating to pronounced lowered foot type

- suitable for elegant footwear and sneakers
- improvement of the body statics
- correction of muscular dysbalances
- alleviation of backache and joint pain

**Individual advice service.fon: 030- 49 000 343.
Delivery within 48h.**

model	design	sizes
S1-1	EVA milled 35 Shore, brown, loose cover	35-50
S1-1	without cover	35-50

cover options
<ul style="list-style-type: none"> • microfibre, beige, brown, blue, orange, green, black • x-static silver textile cover, black

some indications
<ul style="list-style-type: none"> • craniomandibular dysfunction (CMD)

PROPRIO.S1-2



S1-2 relating to pronounced lowered foot type and heel valgus

- suitable for elegant footwear and sneakers
- improvement of the body statics
- correction of muscular dysbalances
- alleviation of backache and joint pain

**Individual advice service. fon: 030- 49 000 343.
Delivery within 48h.**

model	design	sizes
S1-2	EVA milled 35 Shore, brown, with loose cover	35-50
S1-2	without cover	35-50

cover options
<ul style="list-style-type: none"> • microfibre, beige, brown, blue, orange, green, black • x-static silver textile cover, black

some indications
<ul style="list-style-type: none"> • craniomandibular dysfunction (CMD)

PROPRIO.S2-0



relating to forefoot stress pain

- suitable for elegant footwear and sneakers
- improvement of the body statics
- correction of muscular dysbalances
- alleviation of backache and joint pain

**Individual advice service. fon: 030- 49 000 343.
Delivery within 48h.**

model	design	sizes
S2-0	EVA milled 35 Shore, brown, relief MFK II + III without pad, loose cover	35-50
S2-0	pad, without cover	35-50

cover options
<ul style="list-style-type: none"> • microfibre, beige, brown, blue, orange, green, black • x-static, silver textile cover, black

some indications
<ul style="list-style-type: none"> • craniomandibular dysfunction (CMD)

PROPRIO.S3-0



S3-0 relating to contracted foot type

- suitable for elegant footwear and sneakers
- improvement of the body statics
- correction of muscular dysbalances
- alleviation of backache and joint pain

**Individual advice service. fon: 030- 49 000 343.
Delivery within 48h.**

model	design	sizes
S3-0	EVA milled 35 shore, brown with loose cover	35-50
S3-0	without cover	35-50

cover options
<ul style="list-style-type: none"> • microfibre, beige, brown, blue, orange, green, black • x-static silver textile cover, black

some indications

PROPRIO.S3-1



S3-1 relating to mit contracted foot type and forefoot stress pain

- suitable for elegant footwear and sneakers
- improvement of the body statics
- correction of muscular dysbalances
- alleviation of backache and joint pain

**Individual advice service. fon: 030- 49 000 343.
Delivery within 48h.**

model	design	sizes
S3-1	EVA milled 35 Shore, brown, relief MFK II + III without pad, loose cover	35-50
S3-1	pad, without cover	35-50

cover options
<ul style="list-style-type: none"> • microfibre, beige, brown, blue, orange, green, black • x-static silver textile cover black

some indications
<ul style="list-style-type: none"> • craniomandibular dysfunction (CMD)

PROPRIO.S3-6



S3-6 relating to contracted foot type and hallux rigidus

- suitable for elegant footwear and sneakers
- improvement of the body statics
- correction of muscular dysbalances
- alleviation of backache and joint pain

**Individual advice service. fon: 030- 49 000 343.
Delivery within 48h.**

model	design	sizes
S3-6	EVA milled 35 Shore, brown, loose cover	35-50
S3-6	without cover	35-50

cover options
<ul style="list-style-type: none"> • microfibre, beige, brown, blue, orange, green, black • x-static silver textile cover, black

some indications
<ul style="list-style-type: none"> • craniomandibular dysfunction (CMD)

PROPRIO.S4-0



S4-0 relating to lowered foot type and hallux rigidus

- suitable for elegant footwear and sneakers
- improvement of the body statics
- correction of muscular dysbalances
- alleviation of backache and joint pain

**Individual advice service. fon: 030- 49 000 343.
Delivery within 48h.**

model	design	sizes
S4-0	EVA milled 35 Shore, brown, loose cover	35-50
S4-0	without cover	35-50

cover options
<ul style="list-style-type: none"> • microfibre, beige, brown, blue, orange, green, black • x-static silver textile cover, black

some indications
<ul style="list-style-type: none"> • craniomandibular dysfunction (CMD)

PROPRIO.S5-0



S5-0 relating to lowered foot type and tension pain

- suitable for elegant footwear and sneakers
- improvement of the body statics
- correction of muscular dysbalances
- alleviation of backache and joint pain

**Individual advice service. fon: 030- 49 000 343.
Delivery within 48h.**

model	design	sizes
S5-0	EVA milled 35 Shore, brown, loose cover	35-50
S5-0	without cover	35-50

cover options
<ul style="list-style-type: none"> • microfibre, beige, brown, blue, orange, green, black • x-static silver textile cover, black

some indications
<ul style="list-style-type: none"> • craniomandibular dysfunction (CMD)

PROPRIO.S5-1



S5-1 relating to contracted foot type and tension pain

- suitable for elegant footwear and sneakers
- improvement of the body statics
- correction of muscular dysbalances
- alleviation of backache and joint pain

**Individual advice service. fon: 030- 49 000 343.
Delivery within 48h.**

model	design	sizes
S5-1	EVA milled 35 Shore, brown, loose cover	35-50
S5-1	without cover	35-50

cover options
<ul style="list-style-type: none"> • microfibre, brown, blue, orange, green, black • x-static silver textile cover, black

some indications
<ul style="list-style-type: none"> • craniomandibular dysfunction (CMD)

PROPRIO.S6-0



S6-0 relating to medial gonarthrosis

- suitable for elegant footwear and sneakers
- improvement of the body statics
- correction of muscular dysbalances
- alleviation of backache and joint pain

**Individual advice service. fon: 030- 49 000 343.
Delivery within 48h.**

model	design	sizes
S6-0	EVA milled 35 Shore, brown, loose cover	35-50
S6-0	without cover	35-50

cover options
<ul style="list-style-type: none"> • microfibre, brown, blue, orange, green, black • x-static silver textile cover, black

some indications
<ul style="list-style-type: none"> • craniomandibular dysfunction (CMD)

PROPRIO.S6-1



S6-1 relating to lateral gonarthrosis

- suitable for elegant footwear and sneakers
- improvement of the body statics
- correction of muscular dysbalances
- alleviation of backache and joint pain

**Individual advice service. fon: 030- 49 000 343.
Delivery within 48h.**

model	design	sizes
S6-1	EVA milled 35 Shore, brown, loose cover	35-50
S6-1	without cover	35-50

cover options
<ul style="list-style-type: none"> • microfibre, brown, blue, orange, green, black • x-static silver textile cover, black

some indications
<ul style="list-style-type: none"> • craniomandibular dysfunction (CMD)

PROPRIO.S7-2



S7-2 relating to lowered foot type and plantar fasciitis/heel spur

- suitable for elegant footwear and sneakers
- improvement of the body statics
- correction of muscular dysbalances
- alleviation of backache and joint pain

**Individual advice service. fon: 030- 49 000 343.
Delivery within 48h.**

model	design	sizes
S7-2	EVA milled 35 Shore, brown, relief musculus flexor hallucis longus without pad, loose cover	35-50
S7-2	longus without pad, without cover	35-50

cover options
<ul style="list-style-type: none"> • microfibre, beige, brown, blue, orange, green, black • x-static silver textile cover, black

some indications
<ul style="list-style-type: none"> • craniomandibular dysfunction (CMD)

PROPRIO.S7-3

S7-3 relating to contracted foot type and und plantar fasciitis/heel spur



- suitable for elegant footwear and sneakers
- improvement of the body statics
- correction of muscular dysbalances
- alleviation of backache and joint pain

**Individual advice service. fon: 030- 49 000 343.
Delivery within 48h.**

model	design	size
S7-3	EVA milled 35 Shore, brown, relief musculus flexor hallucis longus without pad, loose cover	35-50
S7-3	without pad, loose cover	35-50

Bezugvarianten
<ul style="list-style-type: none"> • microfibre, beige, brown, blue, orange, green, black • x-static silver textile cover, black

some indications

PROPRIO.E1-0

E1-0 relating to slightly lowered foot type



- suitable for comfortable footwear
- improvement of the body statics
- therapy of pain- associated diseases
- correction of muscular dysbalances

**Individual advice service. fon: 030- 49 000 343.
Delivery within 48h.**

model	design	sizes
E1-0	EVA-Sandwich milled 50/ 20/ 35 Shore with loose cover	35-50
E1-0	Shore, without cover	35-50

cover options
<ul style="list-style-type: none"> • microfibre, beige, brown, blue, orange, green, black • x-statics silver textile cover, black

some indications
<ul style="list-style-type: none"> • craniomandibular dysfunction (CMD)

PROPRIO.E1-1



E1-1 relating to pronounced lowered foot type

- suitable for comfortable footwear
- improvement of the body statics
- therapy of pain- associated diseases
- correction of muscular dysbalances

**Individual advice service. fon: 030- 49 000 343.
Delivery within 48h.**

model	design	sizes
E1-1	EVA-Sandwich milled, 50/ 20/ 35 Shore, loose cover	35-50
E1-1	Shore, without cover	35-50

cover options
<ul style="list-style-type: none"> • microfibre, beige, brown, blue, orange, green, black • x-statics silver textile cove, black

some indications
<ul style="list-style-type: none"> • craniomandibular dysfunction (CMD)

PROPRIO.E2-0



E2-0 relating to foot lifting weakness

- suitable for comfortable footwear
- improvement of the body statics
- therapy of pain- associated diseases
- correction of muscular dysbalances

**Individual advice service. fon: 030- 49 000 343.
Delivery within 48h.**

model	design	sizes
E2-0	EVA-Sandwich milled, 50/ 20/ 35 Shore, loose cover	35-50
E2-0	Shore, without cover	35-50

cover options
<ul style="list-style-type: none"> • microfibre, beige, brown, blue, orange, green, black • x-statics silver textile cover, black

some indications
<ul style="list-style-type: none"> • craniomandibular dysfunction (CMD)

FINE CORK BLANKS



injection moulded bed, natural cork

- up to 33/34 available in double sizes
- from size 35 with pad pressure
- tested brand quality

Im Express service: models 260 and 327

model	design	width	sizes
260	without stiffening	medium	19/20-47/48
327	stiffening without pad	medium	35-47/48

FINE CORK SOFT PAD INSOLES



fine cork blanks with stiffening - 3 mm EVA-padding and various covers, pad pressure

- good form stability
- high wearing comfort
- account optimised
- tested material quality

Express service: model B 327 L

model	design	width	sizes
B 327 L	long sole, goatskin	medium	35 – 47/48
B 327 M	long sole, microfibre, beige, black, blue, orange, green	medium	35 – 47/48
B 327 WL	long sole, LEDA perforated	medium	35 – 47/48
B 327 SG	long sole, Springogum	medium	35 – 47/48
option: HK 260 –models with extra stable bed			

FINE CORK LEATHER INSOLES

fine cork blanks with stiffening, mild sleek leather cover, pad pressure



- good form stability
- 100% natural cork
- South German sleek leather
- little amount of time

Express service: models B 363, B 463 and B 463 G

model	design	width	sizes
B 253	half sole	medium	35 – 47/48
B 263	long sole	medium	35 – 47/48
B 353	half sole	medium	35 – 47/48
B 362	long sole	slim	35 – 47/48
B 363	long sole	medium	35 – 47/48
Option: B 4xx -models with solid, fulled sleek leather cover			

additional design
<ul style="list-style-type: none"> • rubber pad, glued • rubber pad, loose • open at front • without pad, without pad pressure

COMPRESSED CORK LEATHER with inner joint wedge

compressed cork blank with HK-stiffening and inner joint wedge, mild sleek leather cover, rubber pad



- very good form stability
- 100% natural cork, SG-contaminant- tested
- South German sleek leather

model	design	width	sizes
EV 253	half sole	medium	35 – 47/48
EV 263	long sole	medium	35 – 47/48
EV 352	half sole	slim	35 – 47/48
EV 353	half sole	medium	35 – 47/48
EV 362	long sole	slim	35 – 47/48
EV 363	long sole	medium	35 – 47/48
EV 366	long sole, quarter shell	medium	35 – 47/48

COMPRESSED CORKLEATHER INSOLES firmly tumbled

compressed cork blanks with HK- stiffening, firmly tumbled sleek leather cover, pad pressure from size 35



- the classic one
- excellent form stability
- 100% natural cork, SG-contaminant-tested
- South German sleek leather

Express service: model EV 453, EV 463 and EV 463 G

models	design	width	sizes
EV 452	half sole	slim	35 – 47/48
EV 453	half sole	medium	19/20 – 47/48
EV 453 extra wide	half sole	extra wide	35 – 47/48
EV 454	half sole, detorsion	medium	19/20 – 47/48
EV 462	long sole	slim	35 – 47/48
EV 463	long sole	medium	19/20 – 47/48
EV 463 FINN	long sole	FINN	35 – 48
EV 463 extra wide	long sole	extra wide	35 – 47/48

additional design	
• company stamp	

COMPRESSED CORK LEATHER SHELL INSOLES



compressed cork shell blanks with HK-stiffening, firmly tumbled, sleek leather cover, rubber pad

- in double sizes up to sizes 33/34
- excellent form stability
- good heel grip ensured
- 100% natural cork, SG-contaminant- tested
- South German sleek leather

model	design	width	sizes
EV 456	half sole, half shell	medium	19/20 – 47/48
EV 466	long sole, quarter shell	medium	19/20 – 47/48
EV 453 H	half sole, detorsion shell	medium	19/20 – 47/48
EV 463 H	long sole, detorsion shell	medium	19/20 – 47/48
EV 455	half sole, half shell	slim	19/20 - 47/48
EV 460	long sole, half shell	slim	19/20 – 47/48
EV 472	half sole, full shell	slim	19/20 – 47/48
EV 472 spezial	half sole, full cup	slim	19/20 – 47/48
EV 482	long sole, full cup	slim	19/20 – 47/48
EV 482 spezial	long sole, full cup	slim	19/20 – 47/48

additional design
<ul style="list-style-type: none"> • loose lining • glued rubber pad (up to sizes 33/34) • without rubber pad, with pad pressure (from size 35/36) • without pad, without pad pressure (from size 35/36)

CNC.CLASSIC.SPORT SHELLS



milled soft pad shell blanks for three foot types and different sports

- raising of the heel bone
- cuboid support
- bedding basis MFK V
- relief of the big toe
- flat pad

model	indication	sizes
XX000- CNC 1-1	normal foot	35 - 50
XX000- CNC 1-2	flat valgus foot	35 - 50
XX000- CNC 1-3	contracted foot	35 - 50

XX - material number	material	hardness		applications
85	PU 25 light blue	monolayer	25° Shore A	running
91	EVA-COMBI 21 orange / black	forefoot hindfoot	30° Shore A 40° Shore A	ball sport
93	EVA-SANDWICH 33 orange / orange / black	support (below) pad (centre) stabilisation (above)	55° Shore A 25° Shore A 45° Shore A	running and ball sport up to 80 kg
94	EVA-SANDWICH 34 black / red / white	support (below) pad (centre) stabilisation (above)	55° Shore A 25° Shore A 35° Shore A	running and ball sport up to 80 kg
96	EVA-SANDWICH 36 yellow / blue / yellow	pad (below) stabilisation (centre) stabilisation (above)	30° Shore A 40° Shore A 40° Shore A	running from 80 kg ball sport up to 80 kg

SBS SPORT.BALANCE.SYSTEM



special cork soft pad shell blanks as an assembly set

- stabilising heel guide
- medial support of the sustentaculum tali
- lateral support in the calcaneocuboidal area
- bedding of the basis by MFK V
- lowering of intermetatarsal angle I and big toe

Express service: all models

model	design	sizes
SBS 10	white EVA top layer, without cover	3 - 14
SBS 11	white EVA top layer, with microfibre cover, silver ionised, blue	3 - 14
SBS 20	black PU top layer, without cover	3 - 14
SBS 21		3 - 14

advantages

- individual insole construction is eased
- lightweight, dimensionally stable and washable materials
- best antibacterial effect by silver ion
- silver ions prevent foot odour

SOFT PAD SAFETY SHOE INSOLES

EVA-SPRINGOSTATIC blanks, pad pressure



- permanently elastic bedding foam
- tested conductivity ensures highest safety
- suitable for all work- and safety
- antibacterial silver textile cover, x-static

model	design	material	sizes
153 wide static	medium , heel hollow	<ul style="list-style-type: none"> • 15 mm SPRINGOSTATIC black in 40 Shore 	35 - 47/48
additional design			
<ul style="list-style-type: none"> • x-static silver textile cover, black, loose/tight 			
DIN EN 344/345			

SOFT PAD HEEL SPUR-BED

EVA-soft pad-beds with heel spur relief, pad pressure



- orthopaedically perfect heel spur supply
- well adapted for the individual production
- quick and and effective
- SG-contaminant- tested

model	design	material	sizes
210 bed HEEL SPUR	medium wide	<ul style="list-style-type: none"> • Sportofit 10 mm white (EVA 50 Shore) 	35 - 47/48
250 bed HEEL SPUR	medium wide	<ul style="list-style-type: none"> • (EVA 50 Shore) 	35 - 47/48

additional design
<ul style="list-style-type: none"> • heel spur pad made of SPRINGOLON-PLUS (memory-effect) 6,4 mm from size 40

SOFT PAD HEEL SPUR INSOLES

EVA-soft pad blanks with various covers, heel spur relief, HK-stiffening, rubber pad



- oorthopaedically perfect heel spur supply
- quick and effective
- very comfortable wearing comfort
- SG-contaminant- tested

model	bed	cover	sizes
210 M wide HEEL SPUR	<ul style="list-style-type: none"> • Sportofit white 10 mm with HK-stiffening (EVA 50 Shore) 	<ul style="list-style-type: none"> • Frelen, 3 mm, white, with microfibre cover (EVA 25 Shore) 	35-47/48
210 M wide HEEL SPUR	<ul style="list-style-type: none"> • Sportofit weiß 10 mm white, with HK-stiffening (EVA 50 Shore) 	<ul style="list-style-type: none"> • Frelen, 3 mm, white, with goatskin cover (EVA 25 Shore) 	35-47/48
213 wide HEEL SPUR	<ul style="list-style-type: none"> • Sportofit white 10 mm with HK-stiffening (EVA 50 Shore) 	<ul style="list-style-type: none"> • Orthosoft, perforated, without cover (PE 30 Shore) 4 mm, white, blue, skin- coloured 	35-47/48
250 L wide HEEL SPUR	<ul style="list-style-type: none"> • Microcork 12 mm with HK-stiffening (EVA 50 Shore) 	<ul style="list-style-type: none"> • (EVA 25 Shore) 	35-47/48

cover options

Please name the desired colour with the order.

SOFT PAD INSOLES EVA-DIAPOWER

EVA-DIAPOWER blanks, pad pressure



- PU- comparable rebound reaction (orange)
- synchronously stable heel hollow (black)
- suitable for sport orthopaedic supply
- SG-contaminant- tested

Im Expres service: model 133 wide

model	design	material	sizes
133 breit	medium wide, heel hollow	<ul style="list-style-type: none"> • DIAPOWER 14 black in 52 Shore orange in 30 Shore 	35 - 47/48
133 FINN	FINN		35 - 48
134	medium wide, flat heel section		35 - 47/48
136	medium wide, quarter shell		35 - 47/48
137	slim, half shell		35 - 47/48

DIAPOWER 14	
<ul style="list-style-type: none"> • skin compatible 	

additional design	
<ul style="list-style-type: none"> • black 	

SOFT PAD INSOLES PE with inner joint wedge

PE-soft pad blanks, inner joint wedge, rubber pad



- soft bedding
- excellent wearing comfort
- wide range of covers
- SG-contaminant- tested

Express service: models 423 wide 4 mm blue perforated and 423 FINN 6 mm skin- coloured

model	bed	cover	sizes
423 slim	<ul style="list-style-type: none"> • Orthosoft white 10 mm with 10 mm internal joint wedge (PE 40 Shore) 	<ul style="list-style-type: none"> • Orthosoft, also perforated (PE 30 Shore) 4 mm white, blue, skin 6 mm skin 8 mm skin • DIAPOWER 7 (Sandwich-EVA 25/18 Shore) 7 mm skin / red 	35 - 47/48
423 wide			35 - 47/48
423 FINN			35 - 48
423 extra wide			35 - 47/48

processing - advantage	
minutes grinding time per pair.	

additional design	
<ul style="list-style-type: none"> • blue, orange, green, black 	

SOFT PAD INSOLES PE

PE-soft pad blanks, rubber pad



- soft bedding
- excellent wearing comfort
- wide range of covers
- SG-contaminant- tested

model	bed	cover	sizes
223 women	<ul style="list-style-type: none"> • Orthosoft white 10 mm (PE 40 Shore) 	<ul style="list-style-type: none"> • Orthosoft, also perforated (PE 30 Shore) 4 mm in white, blue, skin • Orthosoft, also perforated (PE 40 Shore) 5 mm blue • DIAPOWER 7 (Sandwich-EVA 25/18 Shore) 7 mm skin/red 	35 - 47/48
223 slim			35 - 47/48
223 wide			19/20 - 47/48
223 FINN			35 - 48
223 extra wide			35 - 47/48

design	

additional design	
<ul style="list-style-type: none"> • LEDA-cover loose/tight 	

SOFT PAD INSOLES with 100% reset force

PE-soft pad blanks with PU-foam cover, rubber pad



- soft bedding
- excellent wearing comfort
- 100% reset / forcet
- SG-contaminant-tested

model	bed	cover	sizes
4223 women	<ul style="list-style-type: none"> • Orthosoft white 10 mm (PE 40 Shore) 	<ul style="list-style-type: none"> • Springolon, also perforated (PU 15 Shore) 3 mm skin, china, blue 	35 - 47/48
4223 slim			35 - 47/48
4223 wide			19/20 - 47/48
4223 FINN			35 - 48
4223 extra wide			35 - 47/48

design	
<ul style="list-style-type: none"> • HK-stiffening • open at front, loose pad ('additional design') 	

SOFT PAD SHELL INSOLES

PE-soft pad shell blanks, HK-stiffening rubber pad



- in double sizes up to size 33/34
- excellent wearing comfort
- well heel grip ensured
- SG-contaminant-tested

model	design	bed	cover	sizes
225	high jaws	<ul style="list-style-type: none"> • Orthosoft white 10 mm with HK-stiffening (PE 40 Shore) 	<ul style="list-style-type: none"> • Orthosoft, also perforated different colours and thicknesses (PE 28 Shore oder 40 Shore) 	35 - 47/48
226	quarter shell			19/20 - 47/48
227	half shell			19/20 - 47/48
228	full shell			19/20 - 47/48

cover			
Orthosoft (PE 28 Shore)	4 mm	white,	blue, skin
Orthosoft (PE 40 Shore)	5 mm	blue	

additional design	
<ul style="list-style-type: none"> • blue, orange, green, black 	

EVA-SOFT PAD LEATHER INSOLES with neat 's leather cover

EVA-soft pad blanks with perforated neat's leather cover, inner joint wedge, rubber pad



- the classic one
- very durable
- high wearing comfort
- South German neat's leather, specially tanned
- SG-contaminant-tested

Express service: models 203 wide and 203 FINN

model	bed	cover	sizes
203 women	<ul style="list-style-type: none"> • Sportofit brown 8 mm with 6 mm inner joint wedge (EVA 50 Shore) 	<ul style="list-style-type: none"> • Frelen white 3 mm with glued with perforated neat's leather (EVA 25 Shore) 	35 - 47/48
203 slim			35 - 47/48
203 wide			19/20 - 47/48
203 FINN			35 - 48
203 extra wide			35 - 47/48
206 (quarter shell)			19/20 - 47/48

design

The models 203 extra wide und 206 are produced in series with HK-stiffening

additional design

- HK-stiffening
- open at front, loose pad
- module cover J1

SOFT PAD MICROFIBRE INSOLES

EVA-soft pad blanks with microfibre cover, rubber pad



- soft bedding
- high wearing comfort
- good form stability
- SG-contaminant-tested

model	bed	cover	sizes
210 M slim	Sportofit white 10 mm (EVA 50 Shore)	Frelen, white, 3 mm, glued with microfibre (EVA 25 Shore)	35 - 47/48
210 M women			35 - 47/48
210 M wide			19/20 - 47/48
210 M FINN			35 - 47/48
210 M extra wide			35 - 47/48

design
Model 210 M extra wide is produced in series with HK-stiffening.

additional design
<ul style="list-style-type: none"> • open at front, loose pad

PLASTAZOTE-SOFT PAD LEATHER INSOLES

Plastazote-soft pad blanks with calfskin cover, double HK-stiffening, inner joint wedge, rubber pad



- very soft bedding
- very good form stability
- suitable for the geriatric supply
- tested material quality

model	bed	cover	sizes
243 slim	<ul style="list-style-type: none"> • Plastazote grey with 6 mm inside joint wedge and HK-stiffening double (PE 25 Shore) 	<ul style="list-style-type: none"> • Plastazote grey 6 mm, glued with perforated calfskin (PE 25 Shore) 	35 - 47/48
243 wide			19/20 - 47/48
243 FINN			35 - 48
243 extra wide			35 - 47/48

additional design
<ul style="list-style-type: none"> • without leather cover • open at front, loose pad

EVA-SOFT PAD LEATHER INSOLES with goatskin cover

EVA-soft Pad Blanks with perforated goatskin cover, inner joint wedge, rubber pad



- high wearing comfort
- good form stability
- thin, space-saving leather
- SG-contaminant-tested

Im Express service: model 403 wide

model	bed	cover	sizes
403 slim	<ul style="list-style-type: none"> • Sportofit brown 8 mm with 8 mm inner joint wedge (EVA 50 Shore) 	<ul style="list-style-type: none"> • Frelen, skin, 3mm, glued with goatskin (EVA 25 Shore) 	35 - 47/48
403 wide			35 - 47/48
403 FINN			35 - 48
403 extra wide			35 - 47/48

design
Shore

processing advantage
The patented special bed saves 3-5 min. grinding time per pair.

additional design
<ul style="list-style-type: none"> • open at front, loose pad

PE-SOFT PAD LEATHER INSOLES

PE-soft pad blanks with goatskin cover, rubber pad



- soft bedding
- high wearing comfort
- thin, space- saving leather
- SG-contaminant-tested

model	bed	cover	sizes
220 L	<ul style="list-style-type: none"> • Orthosoft white 10 mm (PE 40 Shore) 	<ul style="list-style-type: none"> • Frelen white, 3 mm glued with goatskin (EVA 25 Shore) 	35 - 47/48
220 L FINN			35 - 48

additional design	
<ul style="list-style-type: none"> • open at front, loose pad 	

EVA-PROPHYLAXIS SANDWICH BLANK salmon

EVA-prophylaxis sandwich blank



- padding with memory-effect (salmon)
- soft bedding and pressure distributing (skin)
- dimensionally stable bed
- suitable for diametric supply
- SG-contaminant-tested

model	bed	cover	sizes
415-57	<ul style="list-style-type: none"> • Sportofit brown, 8 mm with 6 mm inner joint wedge (EVA 50 Shore) 	<ul style="list-style-type: none"> • (PU 15 Shore) 	35 - 47/48

additional cover	
<ul style="list-style-type: none"> • blue, black 	

EVA-PROPHYLAXIS SANDWICH BLANK blue

EVA-prophylaxis sandwich blank



- resettable and padding (blue)
- soft bedding and pressure distributing (skin)
- dimensionally stable bed
- suitable for diabetic supply
- SG-contaminant-tested

model	design	cover	sizes
415-59	<ul style="list-style-type: none"> • Sportofit brown, 8 mm with inner joint wedge 6 mm (EVA 50 Shore) 	<ul style="list-style-type: none"> • (PU 15 Shore) 	35 - 47/48

additional design	
<ul style="list-style-type: none"> • black 	

EVA-PROPHYLAXIS SANDWICH BLANK red

EVA-prophylaxis sandwich blank



- soft bedding and pressure distributing (red)
- resettable and padding (red)
- dimensionally stable bed
- suitable for diabetic supply
- SG-contaminant-tested

model	bed	cover	sizes
415-60	<ul style="list-style-type: none"> • (EVA 50 Shore) 	<ul style="list-style-type: none"> • 4 mm, red, 18 Shore 	35 - 47/48

additional design	
<ul style="list-style-type: none"> • black 	

EVA-THERAPY SANDWICH BLANK salmon

EVA-therapy sandwich blank



- padding with memory-effect (salmon)
- soft bedding and pressure distributing (skin)
- dimensionally stable bed
- suitable for diabetic supply
- SG-contaminant-tested

model	bed	cover	sizes
416-57	• (EVA 50 Shore)	• (PU 15 Shore)	35 - 47/48

additional design	
• black	

EVA-THERAPY SANDWICH BLANK blue

EVA-therapy sandwich blank



- resettable and padding (blue)
- soft bedding and pressure distributing (skin)
- dimensionally stable bed
- suitable for diabetic supply
- SG-contaminant-tested

model	bed	cover	sizes
416-59	• (EVA 50 Shore)	• (PU 15 Shore)	35 - 47/48

additional design	
• black	

SOFT PAD PLASTIC SHELLS with textile cover - little bear

soft pad plastic shells for kids with coloured textile cover- little bear



- in double sizes
- 3 mm EVA-padding beds, comfortably soft
- flexible edges give pressure weals no chance
- dimensionally stable bed ensures good heel grip
- tested material quality

model	design	width	sizes
5337	3/4-sohlig	slim	19/20 - 41/42
5337 long sole	long sole	slim	19/20 - 41/42
5338	3/4-sole	medium wide	19/20 - 41/42
5338 long sole	long sole	medium wide	19/20 - 41/42

additional design
<ul style="list-style-type: none"> • winter - integrated protective shield of special aluminium foil against ground cold and wetness • supination wedges black • unformed

SOFT PAD PLASTIC SHELLS with microfibre cover

soft pad plastic shells for kids with blue microfibre cover



- in double sizes
- 3 mm EVA-padding, beds comfortably soft
- flexible edges give pressure weals no chance
- dimensionally stable bed ensures good heel grip
- tested material quality

Express service: models 5137 and 5138 long sole

model	design	width	sizes
5137	3/4-sole	slim	19/20 - 41/42
5137 long sole	long sole	slim	19/20 - 41/42
5138	3/4-sole	medium	19/20 - 41/42
5138 long sole	long sole	medium	19/20 - 41/42

additional design
<ul style="list-style-type: none"> • winter - integrated protective shield of special aluminium foil against ground cold and wetness (silver perforation) • supination wedges, black • unformed

SOFT PAD PLASTIC SHELLS coloured

soft pad plastic shells for kids with coloured EVA- cover, supination wedges



- in double sizes
- 2,5 mm EVA-padding, beds comfortably soft
- very dimensionally stable bed ensures good heel grip
- tested material quality

Express service: model 5237 KT long sole

model	design	width	sizes
5234 KT half sole	half sole, detorsion	medium	19/20 - 33/34
5234 KT long sole	long sole, detorsion	medium	19/20 - 33/34
5237 KT half sole	half sole	medium	19/20 - 47/48
5237 KT long sole	long sole	medium	19/20 - 47/48
5730 A	half sole, high jaws	medium	19/20 - 33/34

INJECTION MOULDED PLASTIC CORES



injection moulded plastic cores, stable, with slight heel hollow, lateral guide and strongly marked longitudinal arch

- in double sizes
- very good supporting core
- flexible heel
- free metatarsal bones
- super-thin

Express service: models 1802-00, 1803-00 and 1804-00

model	design	width	sizes
1802-00	half sole	slim	35/36 - 43/44
1803-00	half sole	medium	35/36 - 47/48
1804-00	half sole	wide	37/38 - 47/48

processing-advantages

- thermoformable at 160°-180°C
- easy to grind with 50^l or 60^l grain at 1500 revolutions/min
- glue advice: PP-glue e.g. ORTEC from Renia

additional design

- loose pad
- lining: paraskin, loose/tight in skin or black
- lining: microcork, 2 mm tight

PLASTIC SOFT PAD INSOLES with EVA-padding

plastic soft pad blanks, stable, with glued cover, 3 mm EVA-padding, rubber pad, tight lining



- very good supporting core, high flexibility (see models 180X-00)
- high wearing comfort
- thin, space- saving cover
- tested material quality

Express service: model 1863-61

model	design	width	sizes
1832-XX	half sole	slim	35 - 44
1833-XX	half sole	medium	35 - 47/48
1834-XX	half sole	breit	37 - 47/48
1862-XX	long sole	slim	35 - 44
1863-XX	long sole	medium	35 - 47/48
1864-XX	long sole	wide	37 - 47/48

addition to model numbers	
- 61	skin- coloured EVA, perforated goatskin
- 63	blue EVA, blue microfibre
- 64	blue EVA, beige microfibre

additional design
• without lining

PLASTIC-LEATHER INSOLES

stable plastic- leather blanks with glued sleek leather cover, rubber pad, tight lining



- very good supporting core, high flexibility(see models 180X-00)
- South German sleek leather
- tested material quality

model	design	width	sizes
1832-XX	half sole	slim	35 - 44
1833-XX	half sole	medium	35 - 47/48
1834-XX	half sole	wide	37 - 47/48
1862-XX	long sole	slim	35 - 44
1863-XX	long sole	medium	35 - 47/48
1864-XX	long sole	wide	37 - 47/48

addition to model numbers
- 06 mild sleek leather, natural look

additional design
• without lining

PLASTIC-SOFT PAD INSOLES with EVA forefoot pad

plastic soft pad blanks, stable, with glued cover, 3 mm EVA-forefoot pad, rubber pad, tight lining



- very good supporting core at high flexibility (see models 180X-00 or 190X-00)
- soft bedding, still space-saving
- high wearing comfort
- tested material quality

model	design	width	sizes
1863-XX	long sole	medium	35 - 47/48
1963-XX	long sole	medium	35 - 47/48

addition to model numbers
- 73 blue EVA, blue microfibre

additional design
• loose cover, loose pad

INJECTION MOULDED PLASTIC CORES with flat heel area

injection moulded plastic cores, stable, with flat heel area and foot-saving design



- in double sizes
- very good supporting core
- flexible heel
- metatarsal bones free
- super-thin

Express service: models 1902-00 and 1903-00

model	design	width	sizes
1902-00	half sole	slim	35/36 - 41/42
1903-00	half sole	medium	35/36 - 47/48

processing-advantages

- thermoformable at 160°-180°C
- easy to grind with 50' or 60' grain at 1500 revolutions/min
- glue advice: PP-glue e.g. ORTEC from Renia

additional design

- loose pad
- paraskin lining, loose/tight in skin or black
- microcork lining, 2 mm, tight

PLASTIC SOFT PAD INSOLES with EVA-layer

plastic soft pad blanks with glued cover, 3mm EVA-layer, rubber pad, tight lining



- very good supporting core at high flexibility (see models 190X-00)
- high wearing comfort
- thin, space-saving cover
- tested material quality

model	design	width	sizes
1932-XX	half sole	slim	35 - 42
1933-XX	half sole	medium	35 - 47/48
1962-XX	long sole	slim	35 - 42
1963-XX	long sole	medium	35 - 47/48

addition to model numbers
- 65 skin coloured EVA, perforated LEDA®
additional design
• without lining

PLASTIC LEATHER INSOLES

plastic-leather blanks, stable, with glued sleek leather cover, rubber pad, tight lining

- very good supporting core at high flexibility (see models 190X-00)
- South German sleek leather
- tested material quality



model	design	width	sizes
1932-XX	half sole	slim	35 - 42
1933-XX	half sole	medium	35 - 47/48
1962-XX	long sole	slim	35 - 42
1963-XX	long sole	medium	35 - 47/48

addition to model numbers
- 06 mild sleek leather natural look

additional design
• without lining

PLASTIC MODULE INSOLES

injection moulded plastic blanks, stable, with attachable modules



- easy but individual correction of foot malposition
- long durable, shock-absorbing plug-in modules
- thermoformable at 120°-140°C
- tested material quality

Im Express service: model mbs

model	design	width	sizes
mbs	half sole	medium	35 - 47

production
mbs - MULTI-BALANCE-SYSTEM – delivered as an assembly kit with all plug-in modules

PLASTIC BLANKS with slight heel hollow

plastic blanks, stable, with slight heel hollow, lateral guide and strongly marked longitudinal arch, optional with glued cover, rubber pad



- quick, individual supply
- very good supporting bed
- super-thin, so space-saving
- tested material quality

model	design	width	sizes
0832-XX	half sole	slim	35 - 44
0833-XX	half sole	medium	35 - 47/48
0834-XX	half sole	wide	37 - 47/48
0862-XX	long sole	slim	35 - 44
0863-XX	long sole	medium	35 - 47/48
0864-XX	long sole	wide	37 - 47/48

addition to model numbers	
- 00	basis blank for individual construction, skin lining
- 12	goatskin, skin lining
- 13	perforated goatskin, skin lining
- 25	blue microfibre, black lining
- 28	black fleece, black lining

processing- advantage
<ul style="list-style-type: none"> • thermoformable at 160°-180°C • easy to grind with 50' or 60' grain at 1500 revolutions/min • glue advice: PP-glue e.g. ORTEC from Renia

additional design
<ul style="list-style-type: none"> • loose cover and pad • loose pad • black lining

PLASTIC BLANKS with flat heel area

stable plastic blanks with flat heel area and foot saving design optional with glued cover, rubber pad



- quick, individual supply
- very good supporting bed
- super- thin, so space saving
- tested material quality

model	design	width	sizes
0932-XX	half sole	slim	35 - 42
0933-XX	half sole	medium	35 - 47/48
0962-XX	long sole	slim	35 - 42
0963-XX	long sole	medium	35 - 47/48

addition to model numbers	
- 00	basis blank for individual design, skin lining
- 12	goatskin, skin lining
- 13	perforated goatskin, lining skin
- 22	LEDA black, lining black
- 24	LEDA beige, lining skin
- 25	microfibre blue, lining black
- 28	Aquiline, lining black

processing-advantage
<ul style="list-style-type: none"> • thermoformable at 160°-180°C • easy to grind with 50' or 60' grain at 1500 revolutions/min • glue advice: PP-glue e.g. ORTEC from Renia

additional design
<ul style="list-style-type: none"> • loose cover and pad • loose pad • black lining

SUPER-THIN PUMPS INSOLE



plastic soft pad blank with glued x- static cover, 2mm, ball pad, rubber pad

- super-thin, fits in every shoe
- special wedge, tested, supporting and flexible
- considerably reduced smell by silver threads
- PU-pad reduces pressure test in the ball region

model	design	width	sizes
2362-74	long sole	slim	35 - 47/48

PLASTIC HEEL MODULE INSOLES with goatskin



flexible plastic soft pad blanks with glued South German goatskin 3mm EVA, rubber pad, heel module pad

- super damping when treading
- relief of the heel bone
- ideal for heel spur therapy
- premium-look

model	design	width	sizes
2763-68	long sole	medium	35 - 47/48
2764-68	long sole	wide	35 - 47/48

The business class for the feet!!

The unique integrated heel module of this CITY.flexible notably reduces the tread impact. A super-damping. The black module material is durable, it is 100% resettable, ensures highest abrasion resistance.

Furthermore the heel bone are strongly relieved by the module form, so an effective heel spur therapy is possible. These CITY.SPRINGER are latest business insoles, because they combine premium-function with premium-look.

PLASTIC HEEL MODULE INSOLES with microfibre cover



flexible plastic soft pad blanks with black glued microfibre cover. 3mm EVA-layer, rubber pad, heel module pad

- super damping when treading
- relief of the heel bone
- ideal for heel spur therapy
- premium-look

model	design	width	sizes
2763-35	long sole	medium	35 - 47/48
2764-35	long sole	wide	35 - 47/48

The business class for the feet!!

The unique integrated heel module of this CITY.flexible notably reduces the tread impact. A super-damping. The black module material is durable, it is 100% resettable, ensures highest abrasion resistance.

Furthermore the heel bone are strongly relieved by the module form, so an effective heel spur therapy is possible. These CITY.SPRINGER are latest businessm insoles, because they combine premium-function with premium-look.

PLASTIC CORES-FLEXIBLE with slight heel hollows

flexible thermoplastic cores with slight heel hollow, lateral guide and pronounced longitudinal arch



- supporting core
- metatarsal free
- flexible heel
- no lining necessary
- very easy processing

model	design	width	sizes
2803-00	half sole	medium	35 - 47/48

processing-advantage
<ul style="list-style-type: none"> • easy to glue

additional design
<ul style="list-style-type: none"> • lining loose/tight

PLASTIC CORES-FLEXIBLE with flat heel area

Flexible thermoplastic cores with flat heel area and foot saving design



- supporting core
- metatarsal free
- flexible heel
- no lining necessary
- very easy processing

model	design	width	sizes
2903-00	half sole	medium	35 - 47/48

processing-advantage
<ul style="list-style-type: none"> • easy to glue

additional design
<ul style="list-style-type: none"> • lining loose/tight

PLASTIC-LEATHER INSOLES

flexible plastic-leather blanks with glued sleek leather cover, rubber pad



- supporting core, high flexible (see models 2803-00/ 2903-00)
- South German sleek leather
- no lining necessary
- very easy processing

model	design	width	sizes
2863-XX	long sole	medium	35 - 47/48
2963-XX	long sole	medium	35 - 47/48

addition to model numbers
- 07 PU-leather

additional design
• lining loose/tight

PLASTIC SOFT PAD INSOLES with PE-layer

plastic soft pad blanks with glued PE- layer, 3mm, blue, rubber pad



- supporting core, high flexibility (see models 2803-00/ 2903-00)
- no lining necessary
- very easy processing

model	design	width	sizes
2863-33	long sole	medium	35 - 47/48
2963-33	long sole	medium	35 - 47/48

additional design
<ul style="list-style-type: none"> • lining loose/tight

PLASTIC HEEL SPUR INSOLES

plastic soft pad insoles with glued EVA-layer, 3mm, blue, rubber pad, heel spur relief



- enormous time saving
- extensive recess
- relief of the plantar tendon
- super thin insole

model	design	width	sizes
2863-33 HEEL SPUR	long sole	slim	35 - 47/48
2865-33 HEEL SPUR	long sole	medium	35 - 47/48

additional design
<ul style="list-style-type: none"> • loose lining • loose heel pad of SPRINGOLON PLUS 3,2 mm up to size 39 • loose heel pad of SPRINGOLON PLUS 6,4 mm from size 40

PLASTIC SOFT PAD INSOLES with cover material

flexible plastic soft pad blanks with glued cover material, 3mm, EVA-layer, rubber pad



- supporting core, high flexibility (see models 2803-00/ 2903-00)
- high wearing comfort
- no lining necessary
- very easy processing

model	design	width	sizes
2863-XX	long sole	medium	35 - 47/48
2963-XX	long sole	medium	35 - 47/48

addition to model numbers
- 65 skin coloured EVA, perforated LEDA®

additional design
• lining loose/tight

PLASTIC COVER INSOLES vital

plastic blanks, vita, with glued comfort pad



- partially flexible bed, so high functional
- super-thin
- 40g, feathery
- comfortable soft edges
- modern design

model	design	width	sizes
1733-XX	half sole	medium	35 - 47/48
1734-XX	half sole	wide	35 - 47/48
1763-XX	long sole	medium	35 - 47/48
1764-XX	long sole	wide	35 - 47/48

addition to model numbers	
-30	microfibre, black

additional design
<ul style="list-style-type: none"> • winter – integrated protective shield, made of special aluminium foil, against ground cold and wetness (silver perforation) • without integrated pad • unformed

active principle
<p>The dimensionable, flexible bed promotes the activity of the longitudinal arch stiffenings and saves the foot musculature from atrophy.</p> <p>All components of the 40g slight insole are adapted for mild help. So the comfort pad gives a high wearing feeling by its special flexibility. The flexible, soft edges ideally match with the feet.</p> <p>Because of their modern design and the 2mm thin structure CITY.vital are particularly popular with fashion- conscious ladies and gentlemen.</p>

PLASTIC SOFT PAD INSOLES - comfort pad

plastic soft pad blanks vital with glued cover, 1,5 mm skin coloured PU-layer, comfort pad, Comfortpelotte



- partially flexible bed, so high functional
- super-thin
- 40g, featherly
- comfortable, soft edges
- modern design

model	design	width	sizes
1733-XX	half sole	medium	35 - 47/48
1734-XX	half sole	wide	35 - 47/48
1763-XX	long sole	medium	35 - 47/48
1764-XX	long sole	wide	35 - 47/48

addition to model numbers
- 87 perforated LEDA, black

additional design

active principle
<p>The dimensionable, flexible bed supports the activity of the longitudinal arch stiffening and saves the foot musculature from atrophy.</p> <p>All components of the 40g slight insole are adapted for mild help. So the comfort pad gives a high wearing feeling by its special flexibility. The flexible, soft edges ideally match with the feet.</p> <p>Because of their modern design and the 2mm thin structure CITY.vital are particularly popular with fashion- conscious ladies and gentlemen.</p>

SPRINGOTEC STARTERKIT

all milling materials for testing



- durable single layer EVA- and PU-foams
- vulcanised multi-layer EVA-foams
- SG-certification mark

material form	material thickness	material size	delivery
	• normally 30 mm	• size 40	• 5 days

SPRINGOTEC EVA-COMBI 21



milling material EVA 30°/40° Shore A orange/black

- forefoot soft bedding
- metatarsal and hindfoot stabilising
- durable
- skin-compatible
- non-toxic

design	thickness	size	delivery
• wedge strip	• 30 mm	• ca. 0,37 qm	• 48 h

proved applications
• ball sport

SPRINGOTEC EVA-COMBI 22



milling material EVA 35°/50° Shore A white/blue

- forefoot soft bedding
- metatarsal and hindfoot stabilising
- durable
- skin-compatible
- non-toxic

design	thickness	size	delivery
• wedge strip	• 30 mm	• ca. 0,37 mm	• 48 h

SPRINGOTEC EVA-SANDWICH 31



milling material EVA 30°/40° Shore A white/blue

- forefoot soft bedding
- metatarsal and hindfoot stabilising
- durable
- skin-compatible
- non-toxic

design	thickness	size	delivery
• wedge strip	• 30 mm	• ca. 0,37 qm	• 48 h

proved applications
• ball sport

SPRINGOTEC EVA-SANDWICH 33



milling material EVA 45°/25°/55° Shore A black/orange/orange

- vulcanised layers without gluing
- safe support and perfect junctions
- durable
- SG-certification mark

FREUDENBERG-exclusive-quality for SPRINGER.

design	thickness	size	delivery
• plastic sheets	• 30 mm	• ca. 1,00 qm	• 48 h

proved applications	references
<ul style="list-style-type: none"> • sports shoes • running and ball sport from 80 kg 	<ul style="list-style-type: none"> • international footballers of different nations

SPRINGOTEC EVA-SANDWICH 34



milling material EVA 35°/25/55° Shore A white/ red/ black

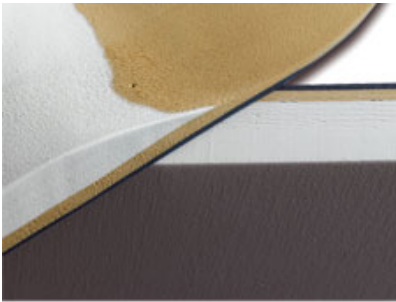
- vulcanised layers without gluing
- save support and perfect junctions
- durable
- SG-certification mark

FREUDENBERG-exclusive-quality for SPRINGER.

design	thickness	size	delivery
• plastic sheets	• 30mm	• ca. 1,00 qm	• 48 h

proved applications	references
• running and ball sport up to 80kg	• HERTHA BSC

SPRINGOTEC EVA-SANDWICH 35



milling material ExA 35°/20°/55° Shore A white/skin/black

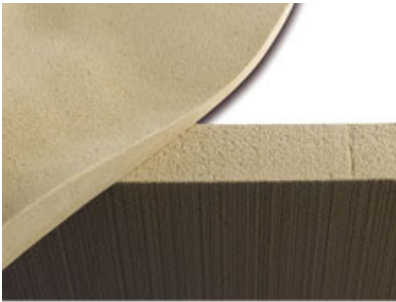
- vulcanised layers without gluing
- save support and perfect junctions
- durable
- SG-certification mark

FREUDENBERG-exclusive-quality for SPRINGER.

design	thickness	size	delivery
• plastic sheets	• 30 mm	• ca. 1,00 qm	• 48 h

proved applications
• for sensible feet

SPRINGOTEC EVA-CORK 50



milling material EVACORK 50° Shore A corky

- very stable
- skin-compatible
- non-toxic

design	thickness	size	delivery
• plastic sheets	• 12mm	• ca. 1,00 qm	• 48 h

SPRINGOTEC EVA-SANDWICH 36



milling material EVA 40°/40°/30°/ Shore A yellow/dark blue/yellow

- vulcanised layers without gluing
- save support and perfect junctions
- durable
- SG-certification mark

FREUDENBERG-exclusive-quality for SPRINGER.

design	thickness	size	delivery
• plastic sheets	• 30mm	• ca. 1,00 qm	• 48 h

proved applications	references
• running from 80kg	• ALBA BERLIN - German record champion

SPRINGOTEC PU 25



milling material PU 25° Shore A light blue

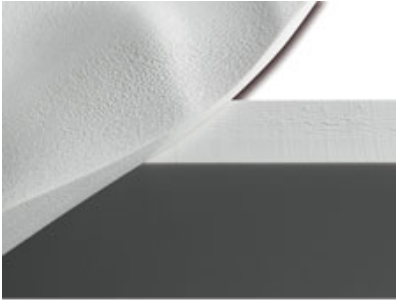
- high reset force
- durability
- SG-certification mark

FREUDENBERG-exclusive-quality for SPRINGER.

design	thickness	sizes	delivery
• plastic sheets	• 30 mm	• ca. 1,00 qm	• 48 h

proved applications
• running

SPRINGOTEC EVA 30



milling material EVA 30° A Shore, white

- durable
- skin-compatible
- non-toxic

design	thickness	size	delivery
• plastic sheets	• 30 mm	• ca. 1,00 qm	• 48 h

SPRINGOTEC EVA 35 blue



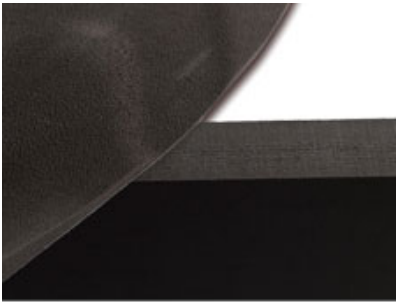
milling materials EVA 35° Shore A blue

- durable
- skin-compatible
- non-toxic

Successful PROPRIO-kids-material for many years.

design	thickness	size	delivery
• plastic sheets	• 10 mm	• ca. 1,00 qm	• 48 h

SPRINGOTEC EVA 35 brown



milling materials EVA 35° Shore A, brown

- durable
- skin-compatible
- non-toxic

Successful PROPRIO-pain-material for many years.

design	thickness	size	delivery
• plastic sheets	• 10 mm	• ca. 1,00 qm	• 48 h

SPRINGOTEC EVA 35 motley



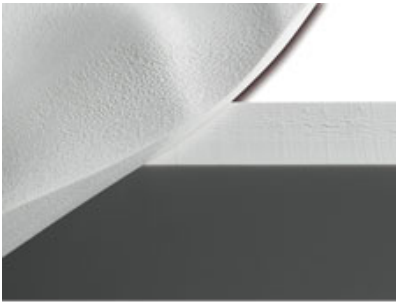
milling material 35° Shore A, motley

- durable
- skin-compatible
- SG-certification mark

FREUDENBERG-exclusive-quality for SPRINGER.

design	thickness	size	delivery
• plastic sheets	• 30 mm	• ca. 1,30 qm	• 48 h

SPRINGOTEC EVA 45



milling material EVA 45° Shore A, white

- durable
- skin-compatible
- non-toxic

design	thickness	size	delivery
• plastic sheets	• 30 mm	• ca. 0,80 qm	• 48 h

X-STATIC LININGS



x-static linings

- enormous time saving
- antibacterial
- no foot odour
- non-toxic

material	applications/features	thickness
X-Static / SPRINGOLONPLUS	<ul style="list-style-type: none"> • diabetic beddings • 100% PU-memory-reset force 	<ul style="list-style-type: none"> • 3,2 mm
X-Static / ORTHOSOFT	<ul style="list-style-type: none"> • sport insoles, football, bike, skating, ski • pumps insoles • excellent EVA-bedding 	<ul style="list-style-type: none"> • 2,0 mm
X-Static / SPRINGOLON	<ul style="list-style-type: none"> • 100% PU-reset force 	<ul style="list-style-type: none"> • 1,5 mm

MICROFIBRE

microfibre, German production



- various colours
- silver ionised design - NANOTEC
- skin-compatible
- non-toxic

running metre (1,37m wide)	roll (12cm wide)	NANOTEC running metre
• orange, green, pink	• green	• blue, orange

TEXTILES



textiles

- good wearing comfort
- skin-compatible
- non-toxic

material	features	quantity unit
X-Static	<ul style="list-style-type: none"> • silver threads give bacteria no chance • against foot odour • black high-tech-look 	<ul style="list-style-type: none"> • running metre 1,60 m wide • roll 12 cm wide
Velon K	<ul style="list-style-type: none"> • very good sweat absorption • abrasion-proof • classic brown 	<ul style="list-style-type: none"> • running metre 1,45 m wide
Little Bear	<ul style="list-style-type: none"> • self-adhesive • cheerful kids design 	<ul style="list-style-type: none"> • running metre 1,50 m wide
Paraskin	<ul style="list-style-type: none"> • classic beige 	<ul style="list-style-type: none"> • running metre 1,50 m wide

SPRINGOGUM



latex foam, lined with micro velour

- slight padding effect
- skin-compatible
- non-toxic
- suited for health insurance insoles

material	hardness	thickness in mm
Springogum	25° Shore A	3,0

NEATS LEATHER AASRAUH



neat's leather, full- grain/nubuck/velour????, South German natural tanning

- constant first quality
- excellent sweat-absorption
- ideal foot climate
- non-toxic

SPRINGER's cult leather, highly valued in insole processing for 25 years.

design
<ul style="list-style-type: none">• sleek 1,00 - 1,25 mm• sleek 1,50 - 1,80 mm• slightly perforated ca. 1,80 mm

GOATSKIN



goatskin, South German natural tanning

- permanent, first quality
- soft and smooth
- skin-compatible
- non-toxic

design
<ul style="list-style-type: none">• slightly perforated

CALF-LINING LEATHER



calf-lining leather, naturally tanned

- permanent first quality
- soft and smooth
- skin-compatible
- non-toxic

design
<ul style="list-style-type: none">• sleek• slightly perforated

ORTHOFOFT COLOURED



EVA-soft foams by FREUDENBERG, padding- and cover material

- comfortably soft bedding
- washable
- very good deep-drawable
- SG-certification mark
- for sport- and kids-insoles

material	hardness	thickness in mm
Orthosoft citrus / black	40° Shore A	2,0
Orthosoft violet / black	40° Shore A	2,0
Orthosoft green / coloured	35° Shore A	2,5 / 4,0 / 5,0 / 8,0 / 10,0
Orthosoft motley	35° Shore A	2,5
Orthosoft black / white	40° Shore A	3,0

DIAPOWER



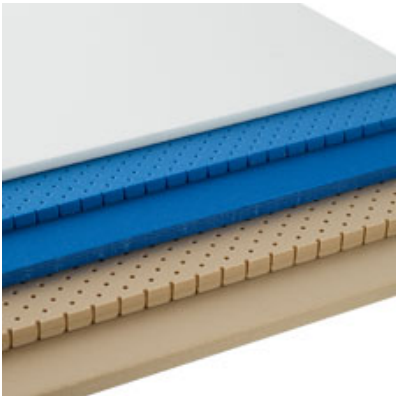
EVA-Sandwich soft foams, vulcanised, building up- and padding material

- absolutely safe stability without gluing
- softly bedding and extra resettable
- very good deep-drawable
- SG-certification mark

FREUDENBERG-exclusive-quality for SPRINGER.

material	thickness in mm	hardness and colour	applications
Diapower 7	4,0 / 3,0	18° Shore A red / 25° Shore A skin	padding material in sport insole construction
Diapower 14	6,0 / 8,0	52° Shore A black	sport insole construction

ORTHOFOFT

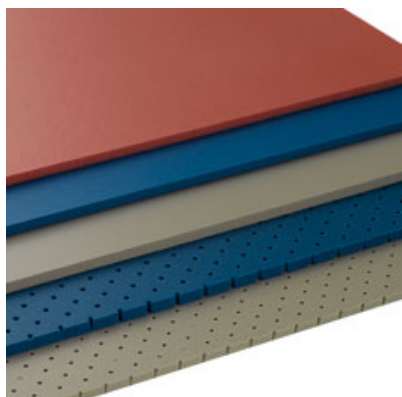


PE-soft foams, build-up-, padding and cover material

- comfortably soft bedding
- washable
- very good deep drawable
- skin-compatible

material	thickness in mm	design
Orthosoft 28° Shore A	4,0 / 6,0 / 8,0	white, blue, skin, perforated
Orthosoft 40° Shore A	3,0 / 5,0 / 10,0	white, blue, perforated

SPRINGOLON / SPRINGOLON PLUS

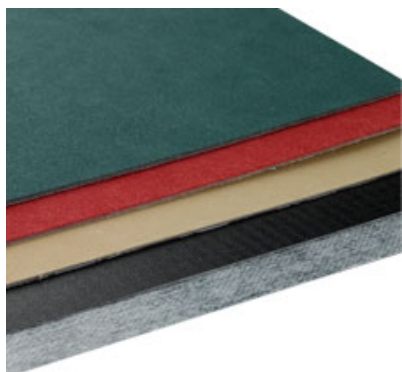


PU-soft foams, padding material

- 100% reset force without fatigue
- pressure relieving and soft
- skin-compatible
- non-toxic

material	thickness in mm	design
Springolon	1,5 / 3,0 / 5,0 / 6,0	china, blue, perforated
SpringolonPlus	3,2 / 6,0	salmon

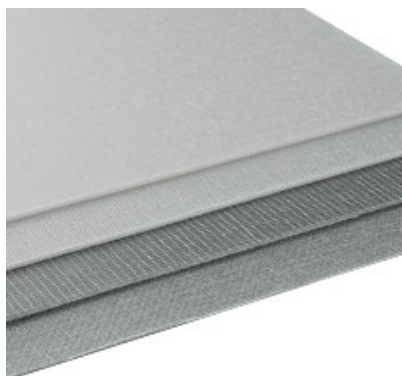
BERLENCOMBI



stiffening material, single-coated

- easy thermoplastic forming
- good grinding without smearing
- high abrasion-proof
- permanent flexible

material	applications	thickness in mm
Berlencombi H10 skin	flexible stabilisations with lining-look in insole construction in high tech look	1,2
Berlencombi H10 green		1,2
Berlencombi H10 red		1,2
Berlencombi H2 black		1,0

BERLENFLEX

thermoplastic stabilisation material on two bases (fleece and gauze)

- viscoplastic, so highly resistant
- good grinding without smearing
- easy cutting with scissors or knife
- skin-compatible

material	applications	thickness in mm
Berlenflex grey	toe caps, stiffeners and peroneus caps, insole construction, bedding stiffenings, arthrodesis supply	1,2
Berlenflex white		1,8



Lengeder Straße 52
13407 Berlin

Fon: 030-49 00 03-0
Fax: 030-49 00 03-11

www.springer-berlin.de
info@springer-berlin.de